



FAS PUMPS
FOR LPG* ROAD TANKER

The new FAS NZ-STW range

TECHNICAL DATA

PUMP TYPE	FAS NZ 48-8,8 STW	FAS NZ 24-8 STW
Flow rate QN	48 m ³ /h (800 l/min)	24 m ³ /h (400 l/min)
Differential pressure (bar)	8,8	8,4
Seal	Shaft seal	Shaft seal
Discharge pressure pN (bar)	8,80	8,45
Nominal power PN (kW)	15,6	8,6
Required drive power (kW)	17,2	10,3
Rotation frequency nN (1/min)	ca. 2,900	2,900
Max. permitted pressure on discharge port (bar)	30,0	30,0
Weight (kg)	89	78
Suction flange	DN80, PN40 DIN EN 1092-2	DN 80, PN40-DIN EN 1092-2
Pressure flange	DN65, PN40 DIN EN 1092-2	DN 65, PN40-DIN EN 1092-2

MODEL FEATURES:

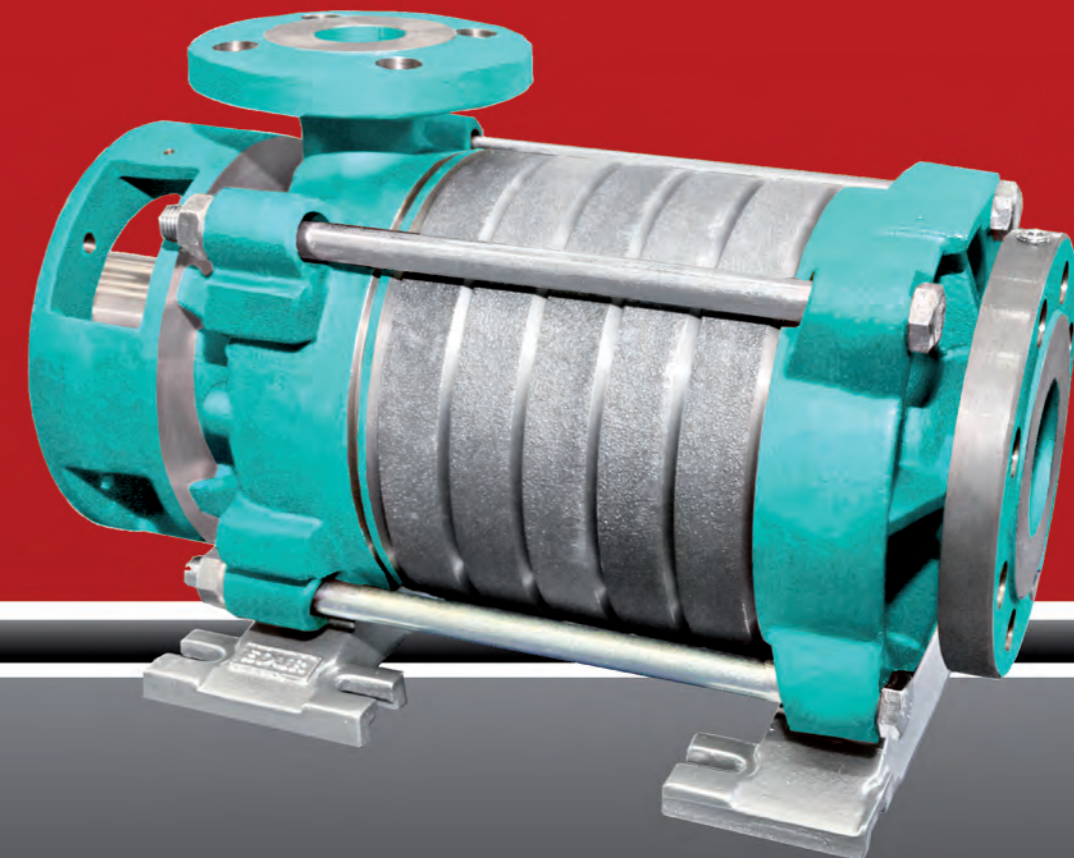
- Compact
- Lightweight (78 und 89 kg)
- Energy-efficient

AVAILABLE VERSIONS:

- Pump with free shaft end
- Pump with clutch bell
- Pump with clutch bell & motor

With the new pumps (NZ-STW series), FAS presents two new solutions for installation in a road tanker. They are considerably lighter, more compact and therefore more space-saving compared to conventional road tanker side-channel pumps. With approx. 78 and 89 kg, these pumps are almost lightweight in their class! Another positive effect of the new technology is the lower power consumption of 8.6 and 15.6 kW, depending on the model.

*Please ask us for pumps for other mediums like Diesel, Fuel, Kerosene, Adblue, CO₂ and other



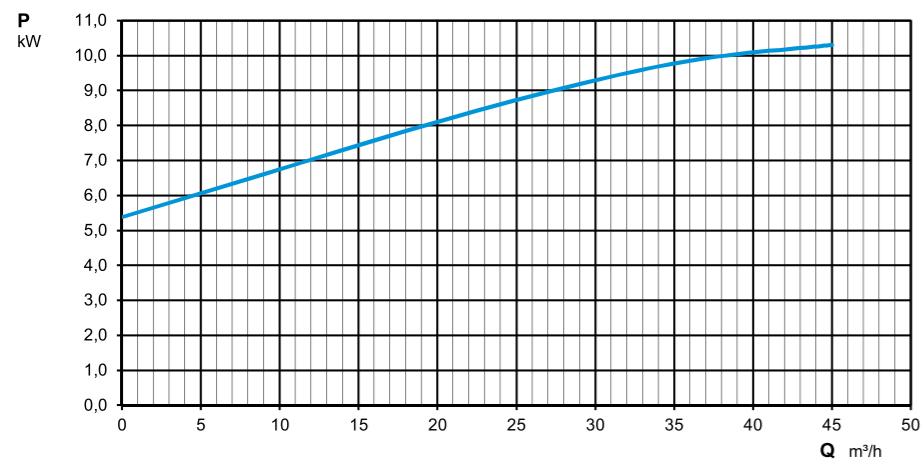
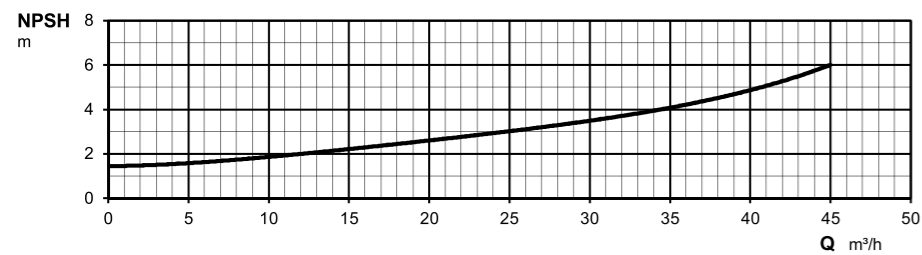
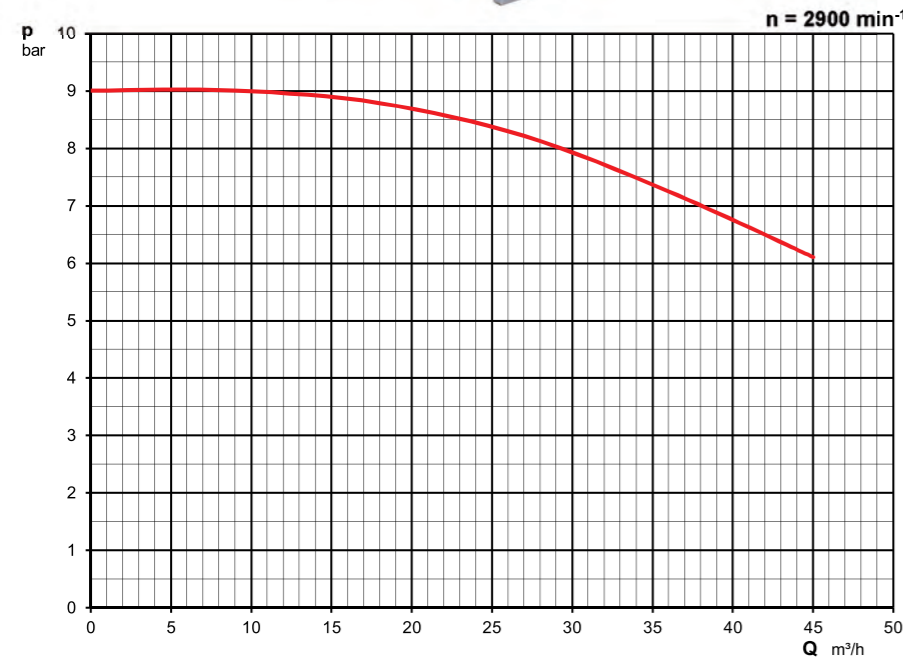
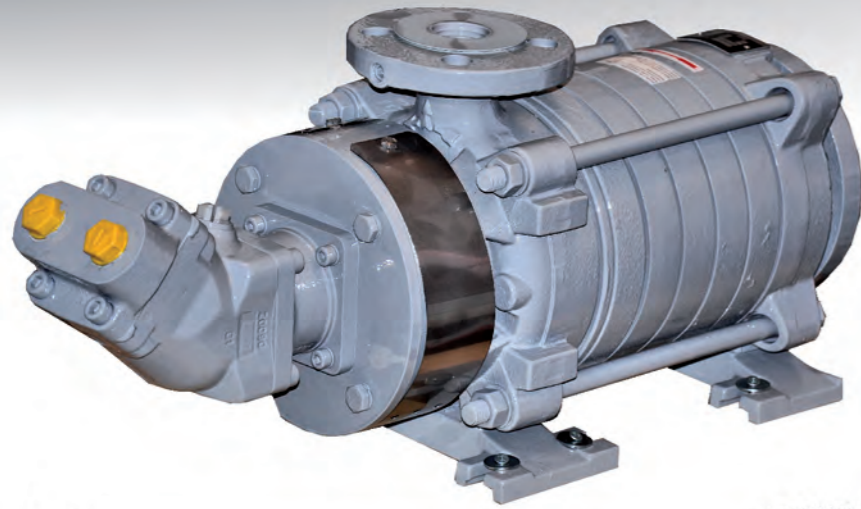
Made in Germany

The alternative solution to side channel pumps! Delivery within one week!

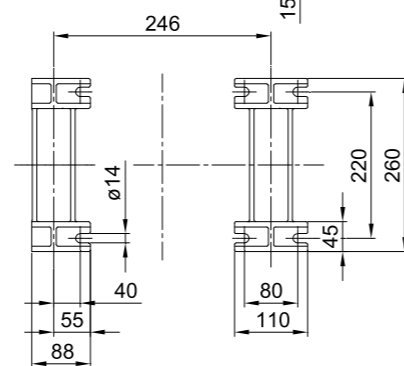
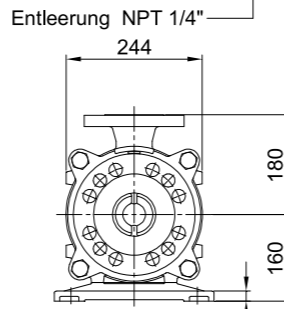
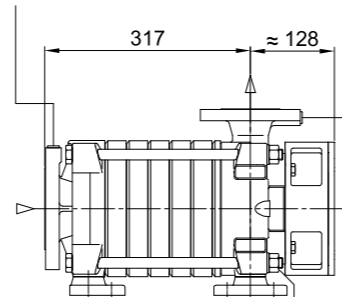
- COMPACT
- LIGHTWEIGHT (78 and 89 kg)
- ENERGY EFFICIENT

WITH ENERGY, SAFETY, COMPETENCE

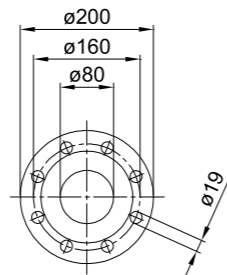
FAS NZ 24-8 STW



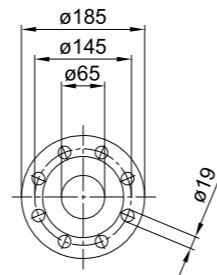
Unterdruckmessanschluss NPT 1/4"
Druckmessanschluss NPT 1/4"



Pumpenfuß

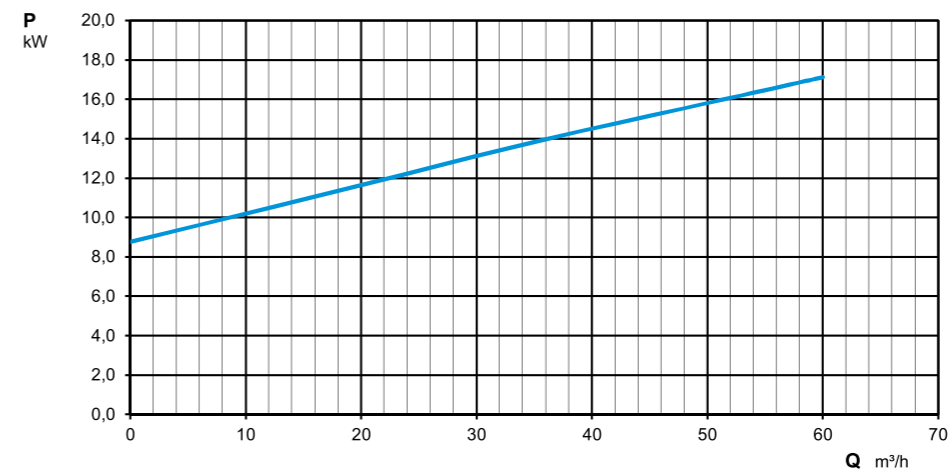
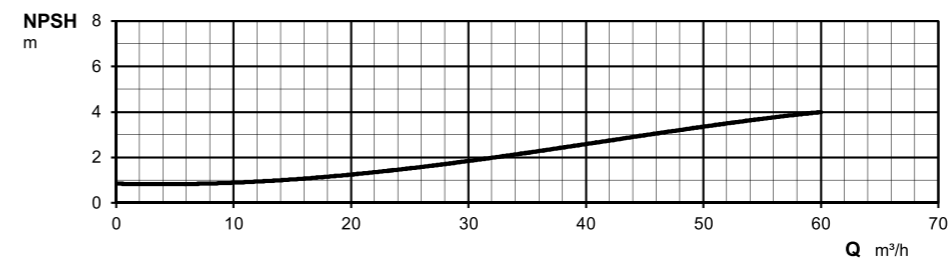
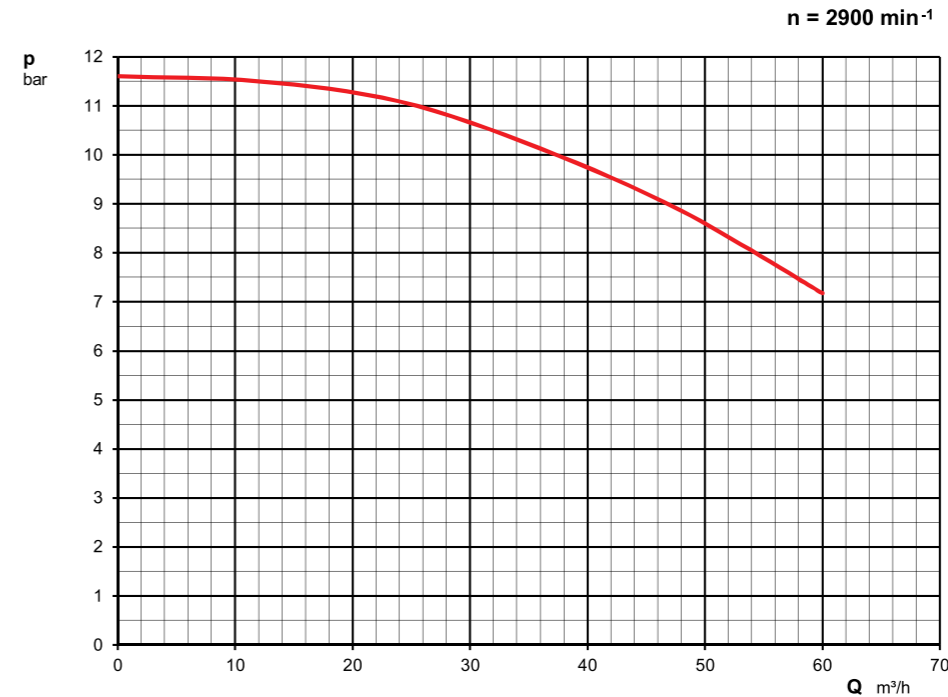
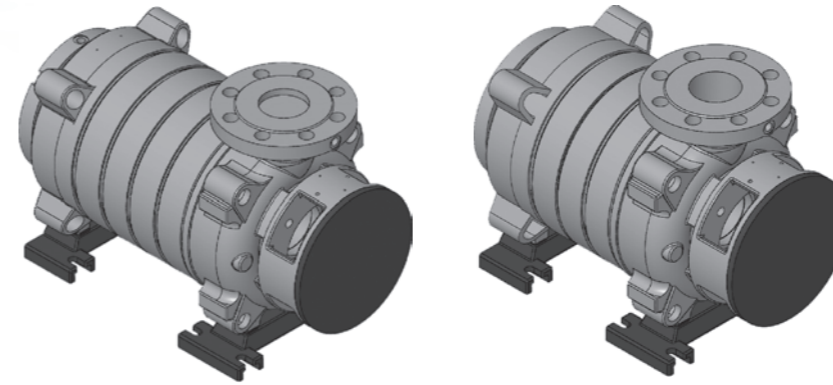


Saugflansch DN 80
PN 40, DIN EN 1092-2



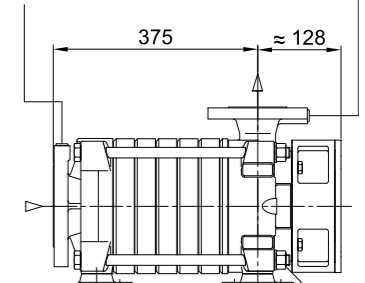
Druckflansch DN 65
PN 40, DIN EN 1092-2

FAS NZ 48-8,8 STW

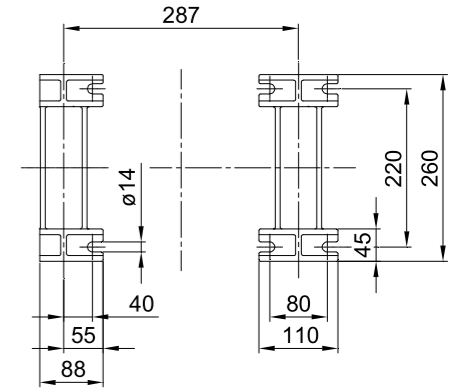
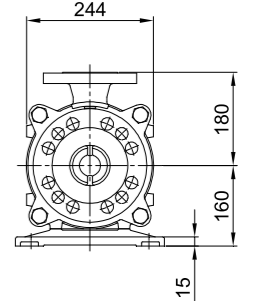


Druckmessanschluss NPT 1/4"

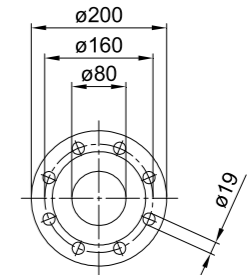
Unterdruckmessanschluss NPT 1/4"



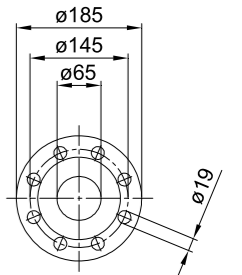
Entleerung NPT 1/4"



Pumpenfuß



Saugflansch DN 80
PN 40, DIN EN 1092-2



Druckflansch DN 65
PN 40, DIN EN 1092-2